

# NORMAL CHECKLIST

## BEFORE START

Passenger Briefing ..... COMPLETE  
 Belts / Doors ..... SECURE  
 Avionics Master ..... OFF  
 Elec Switches (except beacon) ..... OFF  
 Circuit Breakers ..... CHECK IN

## ENGINE START

Fuel Selector ..... BOTH  
 Mixture ..... RICH  
 Throttle ..... OPEN 1/4-1/2 INCH  
 Carb Heat ..... OFF  
 Prime ..... AS REQUIRED  
 Master ..... ON  
 Brakes ..... HOLD  
 Prop Area ..... CLEAR  
 Ignition Start ..... THROTTLE 1000 RPM  
 Oil Pressure ..... CHECK  
 Avionics Master ..... ON  
 Lights ..... AS REQUIRED

*TAXI AWAY FROM HAZARDS*

## AFTER START

Flaps ..... UP  
 Mixture ..... LEAN  
 Transponder ..... SET  
 Directional Gyro ..... SET

## BEFORE TAKEOFF

Flight Controls ..... FREE / CORRECT  
**Fuel Selector** ..... **BOTH**  
**Trim** ..... **TAKEOFF**  
**Mixture** ..... **RICH**  
 Throttle ..... 1700 Rpm  
     Carb heat ..... CHECK  
     Magnetos ..... CHECK  
     Primer ..... IN / LOCKED  
**Engine Instruments** ..... **CHECK**  
     Suction ..... CHECK  
     Ammeter ..... CHECK  
 Throttle ..... IDLE then 1000  
 Flight Instruments ..... CHECK / SET  
**Fuel Quantity** ..... **CHECK**  
 Radio / Transponder ..... FREQ / SQUAWK  
**Flaps** ..... **SET**  
 Doors / Windows ..... SECURE  
**Light / Strobes** ..... **ON**  
 Time ..... Note

## CLIMB

Throttle ..... FULL  
 Flaps ..... UP  
 Engine Instruments ..... MONITOR  
 Mixture ..... LEAN ABOVE 3000'

## CRUISE

Throttle ..... SET ≤75% POWER  
 Engine Instruments ..... MONITOR  
 Mixture ..... LEAN

## BEFORE LANDING

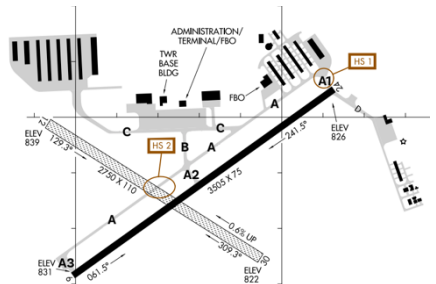
Altimeter ..... SET  
 Fuel Selector ..... BOTH  
 Mixture ..... RICH  
 Carb Heat ..... AS REQUIRED  
 Landing Light ..... ON  
 Seatbelts ..... SECURE

## AFTER LANDING

Radios ..... SET  
 Flaps ..... UP  
 Mixture ..... LEAN  
 Carb Heat ..... OFF  
 Light / Strobes ..... OFF

## SHUTDOWN

Throttle ..... 1000 RPM  
 Avionics Master ..... OFF  
 Lights (except beacon) ..... OFF  
 Mixture ..... CUTOFF  
 Ignition ..... OFF  
 Master ..... OFF  
 Fuel Selector ..... LEFT OR RIGHT  
 Control Lock ..... INSTALL  
 Pitot Cover ..... APPLY



# N572RJ

KARB - ATIS 134.55 - GND 121.6 - TWR 120.3

# EMERGENCY CHECKLIST

## ENGINE FAILURE IN FLIGHT

Airspeed..... 80 MPH  
Fuel Selector ..... BOTH  
Mixture ..... RICH  
Carb Heat ..... ON  
Primer ..... IN / LOCKED  
Ignition ..... BOTH

## FORCED LANDING NO POWER

Airspeed..... (FLAPS UP) 75 MPH  
..... (FLAPS 10°-FULL) 70 MPH  
Mixture ..... CUTOFF  
Fuel Selector ..... OFF  
Ignition ..... OFF  
Flaps..... AS REQUIRED  
Master ..... OFF  
Doors..... UNLATCH

## PRECAUTIONARY LANDING W/ POWER

Flaps..... 20°  
..... (FINAL APPROACH) FULL  
Airspeed..... 70 MPH  
Master ..... OFF  
Doors..... UNLATCH  
Mixture ..... CUTOFF  
Ignition ..... OFF

## LOW-VOLTAGE LIGHT/DISCHARGE

Avionics Master ..... OFF  
ALT Circuit Breaker ..... CHECK IN  
Master (both sides)..... OFF then ON  
Low-voltage Light ..... CHECK OFF  
Avionics Master ..... ON  
*If low-voltage illuminates again:*  
Alternator ..... OFF  
Nonessential Equipment.... REDUCE LOAD  
Land as soon as practical

## EXCESSIVE RATE OF CHARGE

Master (ALT ONLY)..... OFF  
Alternator Circuit Breaker ..... PULL  
Nonessential Equipment.... REDUCE LOAD  
Land as soon as practical

**SEE POH SECTION 3 FOR ADDITIONAL LISTED EMERGENCY PROCEDURES**

## FIRE DURING START

Cranking..... CONTINUE  
If engine starts:  
Throttle ..... 1800 RPM  
Mixture ..... CUT OFF  
If no start:  
Throttle ..... FULL  
Mixture ..... CUTOFF  
Cranking..... CONTINUE  
Master ..... OFF  
Ignition ..... OFF  
Fuel Selector..... OUT  
Extinguisher ..... OBTAIN / ACTIVATE

## ENGINE FIRE IN FLIGHT

Mixture ..... CUTOFF  
Fuel Selector..... OUT  
Master ..... OFF  
Cabin Heat/Air Vents ..... CLOSED  
Airspeed ..... 120 MPH or MORE  
Forced Landing..... EXECUTE

## ELECTRICAL FIRE IN FLIGHT

Master ..... OFF  
Avionics Master..... OFF  
Electrical Switches..... OFF  
Cabin Heat/Air Vents ..... CLOSED  
Extinguisher ..... ACTIVATE, as needed  
VENTILATION..... OPEN (when fire out)  
*With extreme caution and care:*  
Master ..... ON  
Circuit Breakers..... CHECK (do not reset)  
Radio Switches..... OFF  
Avionics Master..... ON  
Radio / Electrical Switches .....  
..... ON, ONE AT A TIME WITH PAUSE

## CABIN FIRE

Master ..... OFF  
Cabin Heat/Air Vents ..... CLOSED  
Extinguisher ..... ACTIVATE then VENTILATE

## WING FIRE

Nav/Strobe Lights ..... OFF  
Pitot Heat..... OFF  
Side slip away from the fire

EMERGENCY: 121.5 SQUAWK: 7700/7600

KARB ATIS 134.55 GND 121.6 TWR 120.3